

CHAPTER IV

COMMUNITY FACILITIES ELEMENT

Community Facilities are an integral part of the character of a community. Adequate and efficiently provided community facilities should be provided so that Hardin County prospers and has an excellent quality of life. State law in KRS Chapter 100 requires that a comprehensive plan have a community facilities element that plans for adequate community facilities for the jurisdiction. Hardin County has been fortunate in that community facilities have been more than adequately provided for in the past and have not been a particular factor in encouraging or deterring growth. Additionally, Hardin County is fortunate in that most, if not all, of the providers of community facilities strategically plan for the provision of their services for the future. Provisions for services are based on information provided in the plan and/or projections for growth generated using information provided by local government. This coordination of effort is serving the community well and dictates that this section of the plan need not be as detailed. This section, where appropriate, does incorporate links and references to where more information concerning the particular community facility provider can be found.

Water Service

Water can be a limiting factor to development proposals. Hardin County is currently served by three water systems: Hardin County Water District No. 1, Hardin County Water District No. 2 and a portion of eastern Hardin County is provided water by City of Bardstown Utility Department. The Hardin County Water Districts are interconnected with the Elizabethtown Water System and the Fort Knox Water System so that resources may be shared if needed. The Hardin County Water Districts have available plans and maps that illustrate present and future water facilities and distribution systems. Information on the Districts may be obtained at the following web sites: www.hc wd.com and www.hardincountywater2.org. As part of any development proposal, the water provider should be contacted and a Hydraulic Analysis performed to determine the availability of water to serve the proposal.

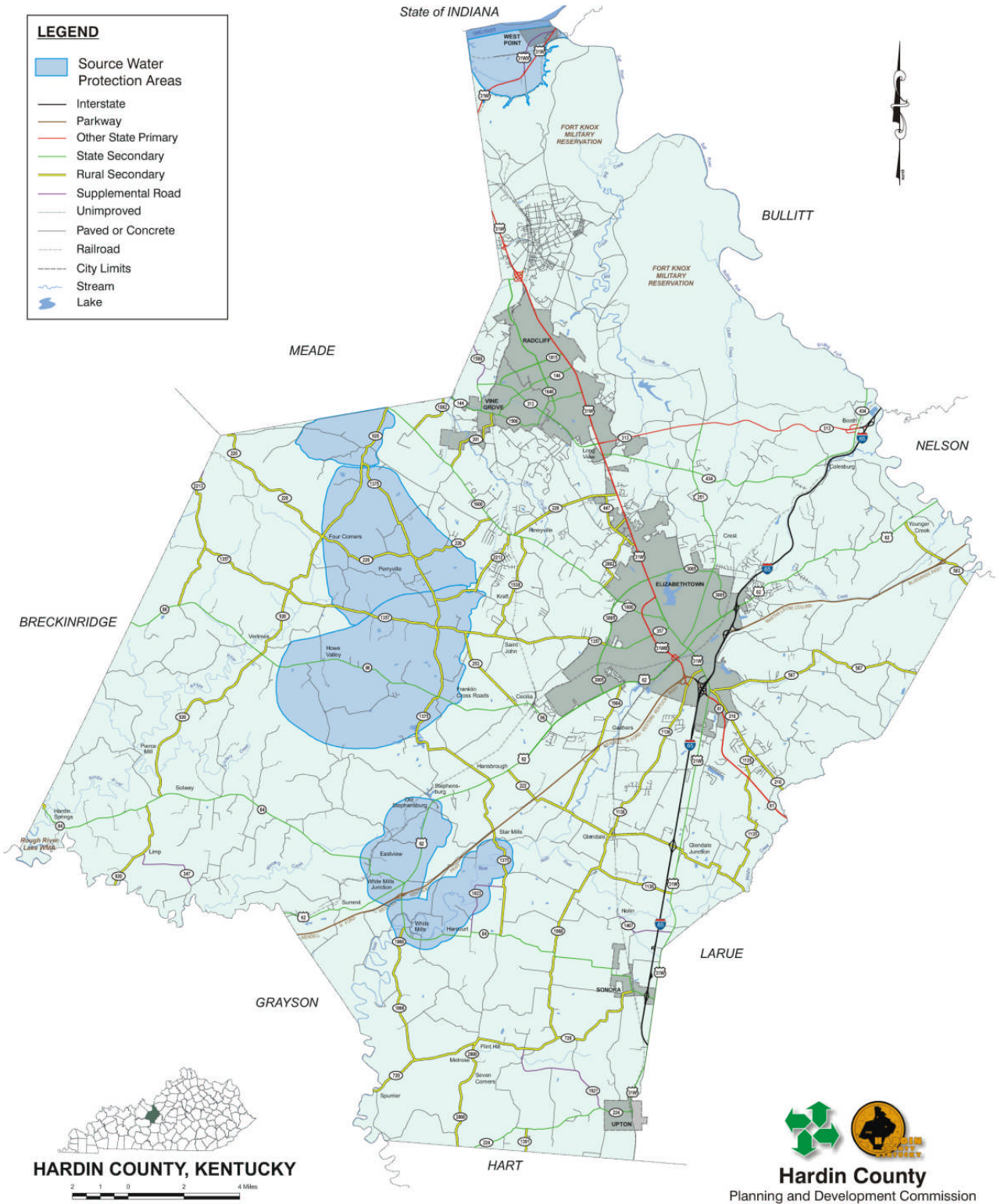
The sources of water used by the Districts have been identified and mapped. These areas are titled Source Water Protection Areas or Wellhead Protection Areas and are presented on Map 3. As presented in the Comprehensive Plan Survey Results, "Hardin County's drinking water supply should be protected" was the statement receiving the greatest support. Any development projects in these areas must comply with the Source Water Protection Plans established by the Districts.

Source Water Protection

HARDIN COUNTY
KENTUCKY

LEGEND

- Source Water Protection Areas
- Interstate
- Parkway
- Other State Primary
- State Secondary
- Rural Secondary
- Supplemental Road
- Unimproved
- Paved or Concrete
- Railroad
- City Limits
- Stream
- Lake



Hardin County
Planning and Development Commission

Electric Service

Hardin County is served by two electric utilities, Kentucky Utilities and Nolin Rural Electric Cooperative. Service areas for these utilities are defined and set by the Public Service Commission. The County should coordinate location of infrastructure with these providers to ensure that conflicts between utility locations within developments can be minimized. More information on these utility providers can be obtained at the following websites: <http://www.eon-us.com/ku/default.asp> and <http://www.nolinrecc.com/>.

Wastewater Treatment

The principal method for treating wastewater in the unincorporated area of Hardin County is the use of on-site treatment systems. The primary method of on-site wastewater treatment is the use of traditional septic systems. Prior to the installation of an on-site wastewater treatment, a property owner must receive approval of the Hardin County Health Department. The statistics in the following TABLE, provided by the Health Department, shows that Hardin County issues the most septic tank permits compared to selected other counties.

TABLE 3

ON-SITE SEWAGE DISPOSAL SYSTEMS Comparison with other Kentucky Counties

<u>County (City)</u>	<u>2000 Census</u>	<u>% Change</u>	<u>Avg. Permits/Yr</u>
Fayette (Lexington)	260,512	15.6%	29
Daviess (Owensboro)	91,545	5.0%	200
McCracken (Paducah)	65,514	22.0%	200
Scott (Georgetown)	33,061	38.5%	200
Oldham (LaGrange)	46,178	38.8%	265
Warren (Bowling Green)	92,522	20.7%	350
Hardin (Elizabethtown)	94,174	5.5%	646

% Change = Growth rate from 1990 to 2000 census.

Source: Lincoln Trail District Health Department, November 2005

A regional wastewater facilities plan is being prepared by Water District No. 2 that will identify future wastewater treatment options. An Interlocal Agreement was completed in April 2007 for an initiative to seek alternatives for wastewater treatment. The Interlocal Agreement was signed by the two Water Districts, the Health Department, Hardin County Planning & Development Commission and Fiscal Court. It is recommended that this effort continue.

Natural Gas Service

Unincorporated Hardin County has only limited natural gas service. Where available, it is provided by Elizabethtown Gas Department and Louisville Gas & Electric. The Elizabethtown Gas Department manages a Gas Storage Facility near Cecilia. All development proposals in this area must comply with the established easements for the properties that are part of the storage area. Additional information may be found at the following web site: www.elizabethtownky.org/home.shtml.

Telecommunications

Hardin County is currently served by both adequate landline telephone communication facilities and high speed internet facilities. Cellular communications are also available in the community but the community should examine the possibility of regulating the placement of telecommunication towers in order to insure that they are placed in the community's best interest.

Solid Waste Service – Landfill & Recycling

Hardin County Fiscal Court owns the Pearl Hollow Landfill located on Audubon Trace. This facility presently serves 38 counties in Kentucky and 2 southern counties in Indiana. Annual volume exceeds 300,000 tons and has been designed to provide for solid waste disposal needs of Hardin County for approximately the next 45-50 years. Information on the landfill facility may be found on the following web site: www.hcky.org/solidwaste.htm.

Animal Control

Animal control activities for all of Hardin County and the incorporated cities are the responsibility of the Animal Control Department and the facility located at 116 Nicholas Street in Elizabethtown. Information on this community function may be found on the following web site: www.hcky.org/animalcontrol.htm.

Schools

Both public and private schools serve Hardin County. The public school system, the Hardin County Public Schools, is the primary provider of educational services in the County. There are three public high schools and two alternative education schools serving grades 7 through 12, 5 middle schools and 12 elementary schools. One of the public middle schools, Radcliff Middle, is to become an elementary school. One of the high schools, John Hardin High, has enrollment over capacity as of the writing of this plan. Two middle schools, Bluegrass and East Hardin are over capacity. Five elementary schools, G. C. Burkhead, Lincoln Trail, Meadow View, New Highland and Woodland are at or over capacity. The Hardin County School District has adopted a facilities plan to address these and other needs. New schools consisting of one high school, one middle school and two elementary schools are planned for the community. The school system believes that these new facilities, along with other planned improvements, should provide adequately for the growth anticipated in the community. Based on growth patterns and other patterns this plan recommends that the new high school be located

in the Glendale area. More information on the Hardin County Public School System can be obtained at the following web site: <http://www.hardin.k12.ky.us/>.

Private schools provide educational facilities that also serve the community and reduce demand on the public school system. Post secondary education is served by Elizabethtown Community College, Elizabethtown Technical College and a satellite campus of Western Kentucky University. All three are located on College Street Road in Elizabethtown on one campus.

Library

The Hardin County Public Library first opened in 1960 in a rented building at 122 North Main Street in Elizabethtown. It then moved to the corner of West Dixie and North Mulberry in 1967. The structure, once used as a Post Office, was owned by the County. In 2002, a new facility was built on Jim Owen Drive, off St. John Road. A north branch of the library was opened in Radcliff in 1967 on South Logsdon Parkway directly across from North Hardin High School. It has since been expanded to provide additional floor space. The facility provides an estimated 5,100 square feet for a combined library system total of 23,200 square feet for Hardin County. Information on the library may be found at the following web site: www.hcpl.info.

Police

Hardin County is served by the Hardin County Sheriff located in the H. B. Fife Courthouse at 100 Public Square Suite 101 in Elizabethtown. Information on this county office may be found on the following web site: www.hcky.org/hcso/. The Kentucky State Police provide services to citizens. The post that serves Hardin County is Post 4 and is located at 1055 North Mulberry in Elizabethtown. Additional information concerning the Kentucky State Police may be obtained at the following web site: www.kentuckystatepolice.org/posts/post4.htm.

Fire Protection

Hardin County is served by twelve Volunteer Fire Departments that are strategically located to best serve the fire protection needs of the county and provide adequate response times for emergency calls. A goal is to provide the departments with vehicles and equipment to obtain the best insurance rating possible and encourage development to be located within five miles of a fire station. **Map 4** illustrates the fire service districts and the location of the fire stations.



Ambulance

The Hardin County Ambulance service is an Advanced Life Support service that provides both emergency and non-emergency service to the citizens of the County. The ambulance service employs paramedics and emergency medical technicians and operates twelve ambulances, five of which are staffed around the clock. Two others are staffed at various times during the day. The Hardin County Ambulance Service currently operates from the following locations: Elizabethtown Station #1 (Administrative Office) at 1450 Rineyville Road in Elizabethtown, North Hardin Station #2 located at 1370 Rogersville Road in Radcliff and South Hardin Station #3 located at 11969 South Dixie in Sonora. Additional information may be found on the following web site: www.hcky.org/ambulance.htm.

Emergency Management

The Hardin County Emergency Management Service has the arduous task of coordinating response efforts among various response agencies during emergency events. The office is located at 1450 Rineyville Road in Elizabethtown. Information is available on the following web site: www.hcky.org/emergency.htm.

Detention Center

The Hardin County Detention Center is located at 100 Lawson Boulevard in Elizabethtown. The Detention Center provides a web site at www.hcky.org/detentioncenter.htm.

Parks / Recreation Facilities & Open Space

Hardin County owns few recreational facilities. Taylor Bend Park located on the Nolin River south of Glendale is one site. Both the Springfield Road former landfill site and the Pearl Hollow landfill property provide opportunities for selected recreational activities. Non-profit community organizations have been established to provide recreational facilities such as the Rineyville Community Park located on Rineyville School Road. Some recent subdivisions have included open space such as the fourteen acre Beckley Woods Nature Preserve in Beckley Woods Subdivision on New Glendale Road. The creation of open space in subdivision design is encouraged in this plan.

Hospital

The Hardin Memorial Hospital is located at 913 Dixie Avenue in Elizabethtown and is a regional healthcare center. Since opening in 1954, Hardin Memorial Hospital has grown to 300 beds and provides care to citizens in Hardin and 10 surrounding counties.

Hardin Memorial Hospital is a not-for-profit, acute care hospital owned by the citizens of Hardin County, governed by the Board of Trustees of the Fiscal Court of Hardin County and managed by Baptist Healthcare Systems. At present, Hardin Memorial Hospital has a medical staff of over 140 active physicians, including 32 specialties and subspecialties as well as primary care. Hardin Memorial Hospital is the third largest employer in Hardin

County. Hardin Memorial Hospital is dedicated to offering quality care to the citizens of Hardin and surrounding counties. With a commitment to exploring new programs and offering new services, Hardin Memorial strives to meet the healthcare needs of families in the Heartland both now and into the future. The hospital provides a web site at www.hmh.net.

Health Department

The Hardin County Health Department provides a number of public health functions. These services are available at two locations: 580 Westport Road in Elizabethtown and 1463 North Wilson Road in Radcliff. Additional information is available at the following web site: www.lincolntraidistricthealthdepartment.state.ky.us/.

Fort Knox Military Reservation

The history of northern Hardin County as a military post was first considered as early as 1903, but it was in 1918 that a field artillery training center was first established around the small agricultural village of Stithton. Realignment to the missions at Fort Knox were established in the 2005 Base Realignment and Closure (BRAC) plan. The Armor Center and The Armor School have been primary elements of the Fort Knox Military Reservation but will be relocated to Fort Benning, Georgia to form the Maneuver Center of Excellence. The two major changes included in the BRAC legislation for Fort Knox in terms of personnel will be the addition of 3rd Brigade, 1st Infantry Division (3,400 personnel) and the Human Resource Command (3,100 personnel). The funding for the BRAC is not finalized so future changes may occur. To learn more about the future of Fort Knox and the latest information on the BRAC implementation the following web site is available: www.oneknox.com.