

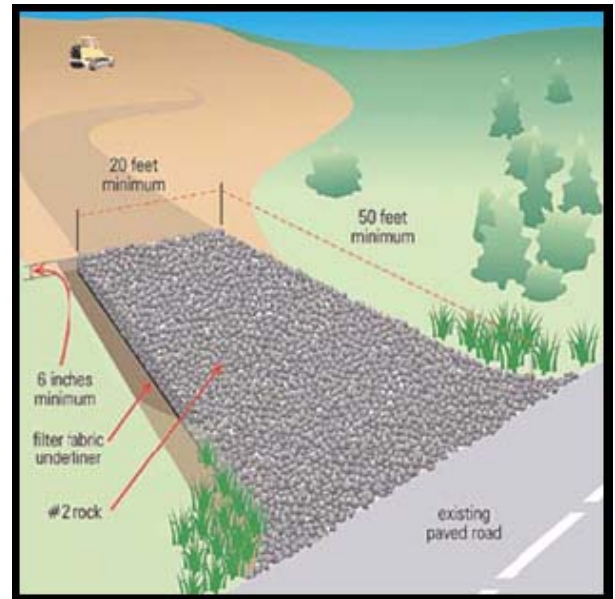
Construction Entrance Stabilization

APPLICATIONS

Stabilized construction entrances are a required part of the erosion control plan for all new development and redevelopment projects that disturb one acre or more, and projects that disturb less than one acre if they are part of a larger common plan of development that disturbs one acre or more. A stabilized construction entrance shall be constructed where vehicles leave the site to enter a public road. The site entrance is the most noticeable part of a construction site; stabilized entrances can improve the appearance to passers by and improve public perception of the construction project.

DESCRIPTION

Stabilizing a construction entrance is accomplished by constructing and maintaining a pad consisting of aggregate on a filter cloth base at each entrance and exit from a construction site so that construction vehicles and equipment do not track mud off-site. As a vehicle drives over the gravel pad, mud and sediment are removed from the vehicle's wheels preventing these pollutants from being tracked onto road ways and being washed into ditches.



DESIGN CONSIDERATIONS

Entrances to a site should be stabilized before construction and other disturbance of the site begins. The stabilized entrance should be wide and long enough that the largest construction vehicle that will enter the site will fit with room to spare. The end of the entrance where it intersects the main road should be “flared”. At streams, swales, or other depressions, a bridge or culvert should be installed. Gravel used in construction of the pad should be large enough that vehicles do not carry it off-site. At least 6 inches of gravel should be installed for the entire length and width of the construction entrance.

INSPECTION AND MAINTENANCE

- Add gravel material when surface voids are visible.
- Soil that is tracked off-site should be swept up immediately for proper disposal.
- Clean out any structure used to trap sediment as necessary.
- Maintain stabilization of entrances until the remainder of the construction site has been fully stabilized.



Hardin County Planning & Development Commission
3rd Floor, 14 Public Square Elizabethtown, KY 42701
Phone: 270-769-5479
Fax: 270-769-5591